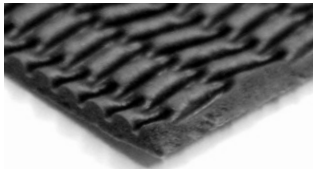


## Underlay Technical Specification

Item Code: TAROYALE700

Issue Date: 22/03/2019

Issue No. 10



### Sponge Rubber Textured Flat

Suitable for the stretch-fit installation of carpets

End Use Classification (BS 5808: 1991 / BS EN 14499 : 2015): HC/U, Heavy Contract Use

#### Standard Specifications\*

Nominal square weight	3560 g/m <sup>2</sup> (105 oz/yd <sup>2</sup> )	
Nominal roll weight	35.6 kg	
Nominal roll area	10.00 m <sup>2</sup> (1.33m x 7.52m)	
Nominal thickness	7.00 mm	ISO 1765

#### BS 5808: 1991 / EN14499 : 2015

End Use Classification	HC/U, Heavy Contract Use	
Mean original thickness from nominal thickness (Max.12%)	5.00 %	ISO 1765
Difference between max. & min. original thicknesses (Max.3mm)	0.30 mm	ISO 1765
Work of compression (Min. 50 J/m <sup>2</sup> Max. 200 J/m <sup>2</sup> )	129 J/m <sup>2</sup>	BS 4098 & ISO 2094
Retention of work of compression (min 40%)	88 %	BS 4098 & ISO 2094
Compression after Dynamic loading	2.90 mm	BS 4098 & ISO 2094
Loss in thickness after Dynamic loading (max 15%)	2.7 %	BS 4052 & ISO 2094
Loss in thickness after static loading (max 15%)	3.2 %	ISO 3415/3416 & BS 4939
Resistance to cracking (not greater than 50mm)	Pass	EN 14499 & BS 5808

#### Flammability

Hot metal nut test (tested in Interfloor laboratory)	Low radius of effects of ignition	BS 4790 & BS 5287
--	-----------------------------------	-------------------

#### Other Specifications

Odour	No objectionable odour	
Antimicrobial and mildew resistant	Yes	
Colour / backing	Black / unprinted Textron® backing	
Packaging	Blue tinted film with printed insert	
Thermal resistance	0.8 togs	BS 4745
Impact sound reduction (Delta Lw)	31 dB ‡ BSEN ISO 140-8: 1998 and BSEN ISO 717-2: 1997	
Emissions (US Carpet & Rug Institute)	Meets low VOC emission criteria	

#### Certification



#### Guarantee

Guaranteed for the serviceable lifetime of the carpet when used in accordance with the End Use Classification.

#### Notes

- \* The nominal roll dimensions have been quoted. These may vary slightly but will comply with the requirements of BS EN 14499:2015
- ‡ Value derived from similar product test results